

Product Data Sheet DropSide™ Siding Insulation

DROPSIDE™

DropSide insulation is manufactured from high quality Expanded Polystyrene (EPS) ridged Foam custom manufactured to fit almost all profiles of vinyl metal siding. Using the latest in computer design technology and state of the art machinery, ABT Foam can produce contoured EPS insulation to match the vinyl siding brand and their profiles.

Adding a layer of DropSide contoured insulation to the back of vinyl and metal siding adds an extra layer of protection from hot and cold. DropSide is ideal for new construction and retrofit, and is excellent for residential and commercial structures.

The combination of DropSide insulation and durable vinyl and metal siding adds beauty, strength, protection and additional energy efficiency to any home or building. When you want the look and feel of hardboard siding, don't settle for high maintenance products like paintable sidings. Choose a rigid, low maintenance product that remains beautiful and offers cost savings year after year.

EPS FOAM INSULATION

Expanded polystyrene (EPS) is a closed cell, light weight, resilient foamed plastic insulation. EPS is able to withstand the abuse of temperature cycling and assuring long term performance. EPS has been an innovative building material since the 1950's and is recognized as a mainstream insulation and building material. EPS is an ideal choice for green building designs offering environmental advantages that can maximize energy efficiency.

EPS ENVIRONMENTAL IMPACT

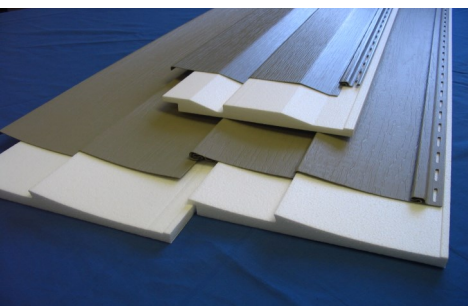
EPS insulation is an inert, organic material produced from petroleum and natural gas by-products. EPS insulation does not contain CFC's, HCFC's, adhesives or formaldehyde. EPS foam insulation provides no nutritive value to plants, animals, or micro-organisms. It will not rot and is highly resistant to mildew and mold resistant (Tested in accordance with ASTM C1338 "Standard Test Method for Determining Fungi Resistance of Insulation Materials and Facings).

LONG TERM INSULATION VALUE

R-value means the resistance to heat flow. The higher the R-value the greater the resistance to heat flow. The thermal performance of EPS insulation, as with any insulation product, depends upon the correct installation using good building practice. When properly installed, the R-value of EPS insulation remains constant for the life of the application. This is because the closed cell structure of EPS only contains air. As a result, the R-value of EPS insulation provided for each product type may be used as a design value without any adjustment for age.

TEMPERATURE CYCLING

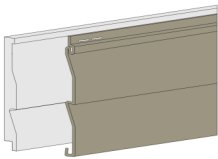
EPS is able to withstand the riggers of temperature cycling assuring long term performance. In a series of tests conducted by the Dynatech Research Development Co., Cambridge, MA, core specimens removed from existing freezer walls, some as old as 16 years, demonstrates EPS withstands freeze-thaw cycling without loss of structural integrity or other physical properties.



FEATURES AND BENEFITS

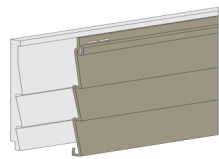
- Excellent rigidity which insures the siding will install straight and snug while helping to cover many wall imperfections.
- Can increase impact resistance to vinyl siding up to 300% adding more dent Resistance.
- DropSide insulation is not attached to the vinyl siding allowing for independent expansion and contraction between the siding and insulation.
- No adhesives or fasteners to restrict the natural and independent movement of siding and insulation which can cause buckling of vinyl siding.
- Additional insulation for greater comfort in winter and summer.
- Contoured insulation adds to the rigidity of standard hollow back siding and tightens laps adding to the beauty of your home or building.

TYPICAL SIDING PROFILES



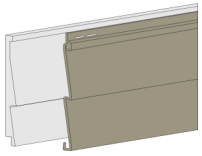
Double 4"
Double 4.5"
Double 5"

Dutch Lap



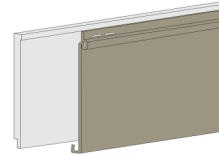
Triple Three

Triple Three



Double 4"
Double 4.5"
Double 5"

Straight Lap



Single 6"
Single 7"
Single 8"

Single Lap

BENEFITS FOR EPS FOAM INSULATION

- 4 feet or 8 feet long panels
- Aged R-value
- Closed cell insulation
- EPS foam insulation is mold resistant
- No Formaldehyde
- No Chlorofluorocarbons (CFCs)
- No Hydrochlorofluorocarbons (HCFCs)
- EPS does not affect indoor air quality
- EPS is able to withstand the abuse of temperature cycling
- Does not rot

TYPICAL PHYSICAL PROPERTIES OF EPS FOAM INSULATION

| Density Range | ASTM C578 | Compressive (psi) 10% Deformation | R-value @ 75° per inch | Moisture Resistance perm. In. | Maximum Service Temperature | ASTM E84 Smoke Developed | ASTM E84 Flame Spread |
|---------------|-----------|-----------------------------------|------------------------|-------------------------------|-----------------------------|--------------------------|-----------------------|
| *0.90 - 1.14 | Type I | 10 - 14 | 3.85 | 2.0 - 5.0 | 167° Long Term | Less than 450 | Less than 25 |
| 1.15 - 1.34 | Type VIII | 13 - 18 | 3.92 | 1.5 - 3.5 | 167° Long Term | Less than 450 | Less than 25 |
| 1.35 - 1.79 | *Type II | 15 - 21 | 4.17 | 1.0 - 3.5 | 167° Long Term | Less than 450 | Less than 25 |
| 1.80 - 2.20 | Type IX | 25 - 33 | 4.35 | 0.6 - 2.0 | 167° Long Term | Less than 450 | Less than 25 |

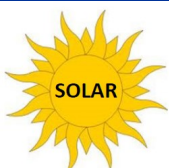
Caution: Expanded Polystyrene (EPS) contains a flame retardant. However, it should be considered flammable and should not be exposed to any source of combustion. EPS insulation should be covered with a thermal barrier or otherwise installed in accordance with applicable building code requirements.

Solvent Attack: EPS is subject to attack by petroleum based solvents. Care should be taken to prevent contact between EPS and these solvents or their vapors.

Storage: EPS foam products must be stored flat on the original shipping runners, pallet or cartons. The material must be elevated above floor or ground level. If stored outdoors, must be covered with UV and waterproof covering. Do not store close to open flame.

Ultraviolet Degradation: Prolonged exposure to sunlight will cause slight discoloration and surface dusting of EPS insulation. The insulating properties will not be significantly affected under normal usage. EPS stored outside should be protected with a light-colored opaque tarpaulin.

"DISCLAIMER: The customer and the customer's architects, engineers, consultants and other professionals are completely responsible for the selection, installation, and maintenance of any product purchased from ABT FOAM, LLC., and EXCEPT AS EXPRESSLY PROVIDED IN ABT FOAM'S STANDARD WARRANTIES, ABT FOAM MAKES NO WARRANTY, EXPRESS OR IMPLIED, AS TO THE SUITABILITY, DESIGN, MERCHANTABILITY, OR FITNESS OF THE PRODUCT FOR CUSTOMER'S APPLICATION. Copies of ABT FOAM'S standard warranties are available upon request."
ABT FOAM'S Trade Mark Products: Advanced Wrap™, DropSide™ and PreFur™



ABT Foam
1405 Industrial Drive • Statesville, NC 28625
Phone 704-873-9081 • Toll Free 866-634-6057 • Fax 704-873-908
www.abtfoam.com



Made in USA