

## Product Data Sheet PreFur - One Step Furring and Insulation

### PREFUR INSULATION PANELS

PreFur™ is a revolutionary new method of installing expanded polystyrene (EPS) rigid foam insulation and furring strips in a one step application. The EPS foam is manufactured with receiver channels allowing the wood or metal furring strips to recess making a flush and smooth surface between the EPS foam and furring strips.

PreFur is manufactured from EPS foam meeting or exceeding ASTM C578, Type I, standards for testing rigid foam plastic. The panel size 4 feet wide x 8 feet long and thickness from 1-1/2 up to 4 inches thick (see chart on back). The wood furring strips are 3/4 inches thick x 2-1/2 to 3-1/2 inches wide x 8 feet. long, spaced 16 inches on centers or optional 24 inches O.C.

### APPLICATIONS

PreFur is ideal for use in numerous construction applications such as interior finishing of retail space, offices, concrete tilt-up, residential basement finishing, and many other applications. PreFur is also used for exterior applications such as for adding furring and insulation to masonry buildings then installing siding or other exterior finish products over PreFur. PreFur is an excellent way of installing furring and insulation in one step residential re-roofing installed over existing shingle roofing then installing metal roofing panels to the furring.

### INSTALLATION

It's recommended to mechanically attach PreFur to the wall or substrate using building code approved fasteners, fastening patterns and fastening methods. For interior use, gypsum wall board or other building code approved covering must be applied over PreFur. PreFur must be used in accordance with local building and fire codes.

### PREFUR FEATURES AND BENEFITS

- Advanced Wrap tough film laminate (Optional)
- Standard in natural white EPS (No Film)
- 1.0 mil polypropylene laminate (Optional)
- 1" grids for nailing & cutting (Optional)
- Clear printed on front surface (Optional)
- Metalized polypropylene on back (Optional)
- Clear laminate easy to see furring (Optional)
- Manufactured up to 4" thick
- Wood Furring (Standard or Pressure Treated)
- Wood furring is extra wide for added nailing surface
- Furring: 16" or 24" O.C.

### EPS ENVIRONMENTAL IMPACT

EPS insulation is an inert, organic material produced from petroleum and natural gas by-products. EPS insulation does not contain CFC's, HCFC's, adhesives or formaldehyde. EPS foam insulation provides no nutritive value to plants, animals, or micro-organisms. It will not rot and is highly resistant to mildew and mold resistant (Tested in accordance with ASTM C1338 "Standard Test Method for Determining Fungi Resistance of Insulation Materials and Facings).

### LONG TERM INSULATION VALUE

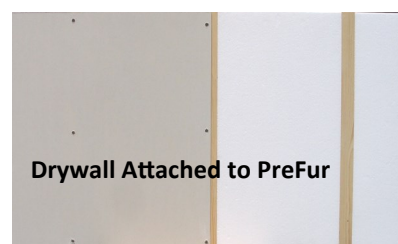
R-value means the resistance to heat flow. The higher the R-value the greater the resistance to heat flow. The thermal performance of EPS insulation as with any insulation product, depends upon the correct installation using good building practice. When properly installed, the R-value of EPS insulation remains constant for the life of the application. This is because the closed cell structure of EPS only contains air. As a result, the R-value of EPS insulation provided for each product type may be used as a design value without any adjustment for age.

### TEMPERATURE CYCLING

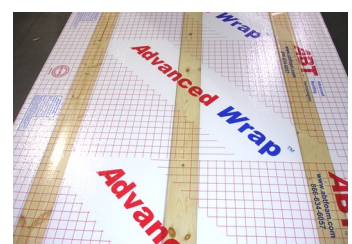
EPS is able to withstand the riggers of temperature cycling assuring long term performance. In a series of tests conducted by the Dynatech Research Development Co., Cambridge, MA, core specimens removed from existing freezer walls, some as old as 16 years, demonstrates EPS withstands freeze-thaw cycling without loss of structural integrity or other physical properties.

### ATTACHMENT

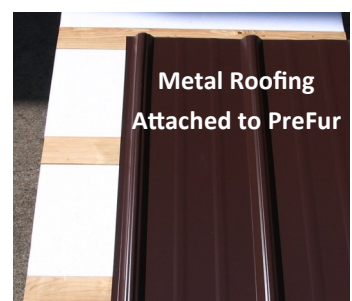
Mechanically attach PreFur through the furring and into to structural wall surface or substrate by using building code approved mechanical fasteners such as Tapcon™ or other brand and types of building code approved fasteners.



Drywall Attached to PreFur



Siding Attached to PreFur



Metal Roofing  
Attached to PreFur

## PREFUR SIZES AND PACKAGING

Standard Thickness	Sheet Size	LTL Shipments Sheets / Pallet	53' Van Shipments Sheets / Pallet	Pallets per 53' Van	Sheets per 53' Van	Sq. Ft. per 53' Van
1-1/2"	4' x 8'	60	64	13	832	26,624
2"	4' x 8'	45	48	13	624	19,968
2-1/2"	4' x 8'	36	38	13	494	15,808
3"	4' x 8'	30	32	13	416	13,312
3-1/2"	4' x 8'	25	27	13	351	11,232
4"	4' x 8'	22	24	13	312	9,984

Other sizes are available up to 4" thick

## TYPICAL PHYSICAL PROPERTIES OF EPS INSULATION

Density Range	ASTM C578	Compressive (psi) 10% Deformation	R-value @ 75° per inch	Moisture Resistance perm. In,	Maximum Service Temperature	ASTM E84 Smoke Developed	ASTM E84 Flame Spread
0.90 - 1.14	Type I	10 - 14	3.72 avg.	2.0 - 5.0	167° Long Term	Less than 450	Less than 25
1.15 - 1.34	Type VIII	13 - 18	3.91 avg.	1.5 - 3.5	167° Long Term	Less than 450	Less than 25
1.35 - 1.79	Type II	15 - 21	4.08 avg.	1.0 - 3.5	167° Long Term	Less than 450	Less than 25
1.80 - 2.20	Type IX	25 - 33	4.27 avg.	0.6 - 2.0	167° Long Term	Less than 450	Less than 25

**Caution:** Expanded Polystyrene (EPS) contains a flame retardant. However, it should be considered flammable and should not be exposed to any source of combustion. EPS insulation should be covered with a thermal barrier or otherwise installed in accordance with applicable building code requirements.

### SOLVENT ATTACK

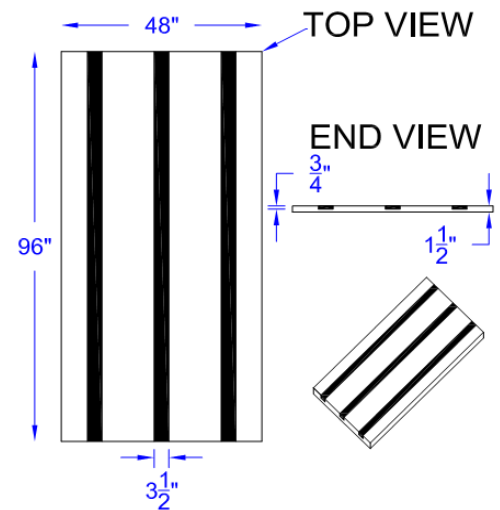
EPS is subject to attack by petroleum based solvents. Care should be taken to prevent contact between EPS and these solvents or their vapors.

### STORAGE

EPS foam products must be stored flat on the original shipping runners, pallet or cartons. The material must be elevated above floor or ground level. If stored outdoors, must be covered with UV and waterproof covering. Do not store close to open flame.

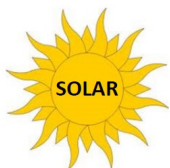
### ULTRAVIOLET DEGRADATION

Prolonged exposure to sunlight will cause slight discoloration and surface dusting of EPS insulation. The insulating properties will not be significantly affected under normal usage. EPS stored outside should be protected with a light-colored opaque tarpaulin.



Insulation And Furring In One Step

"DISCLAIMER: The customer and the customer's architects, engineers, consultants and other professionals are completely responsible for the selection, installation, and maintenance of any product purchased from ABT FOAM, LLC., and EXCEPT AS EXPRESSLY PROVIDED IN ABT FOAM'S STANDARD WARRANTIES, ABT FOAM MAKES NO WARRANTY, EXPRESS OR IMPLIED, AS TO THE SUITABILITY, DESIGN, MERCHANTABILITY, OR FITNESS OF THE PRODUCT FOR CUSTOMER'S APPLICATION. Copies of ABT FOAM'S standard warranties are available upon request."  
 ABT FOAM'S Trade Mark Products: Advanced Wrap™, DropSide™ and PreFur™



ABT Foam  
 1405 Industrial Drive • Statesville, NC 28625  
 Phone 704-873-9081 • Toll Free 866-634-6057 • Fax 704-873-908  
[www.abtfoam.com](http://www.abtfoam.com)



Made in USA